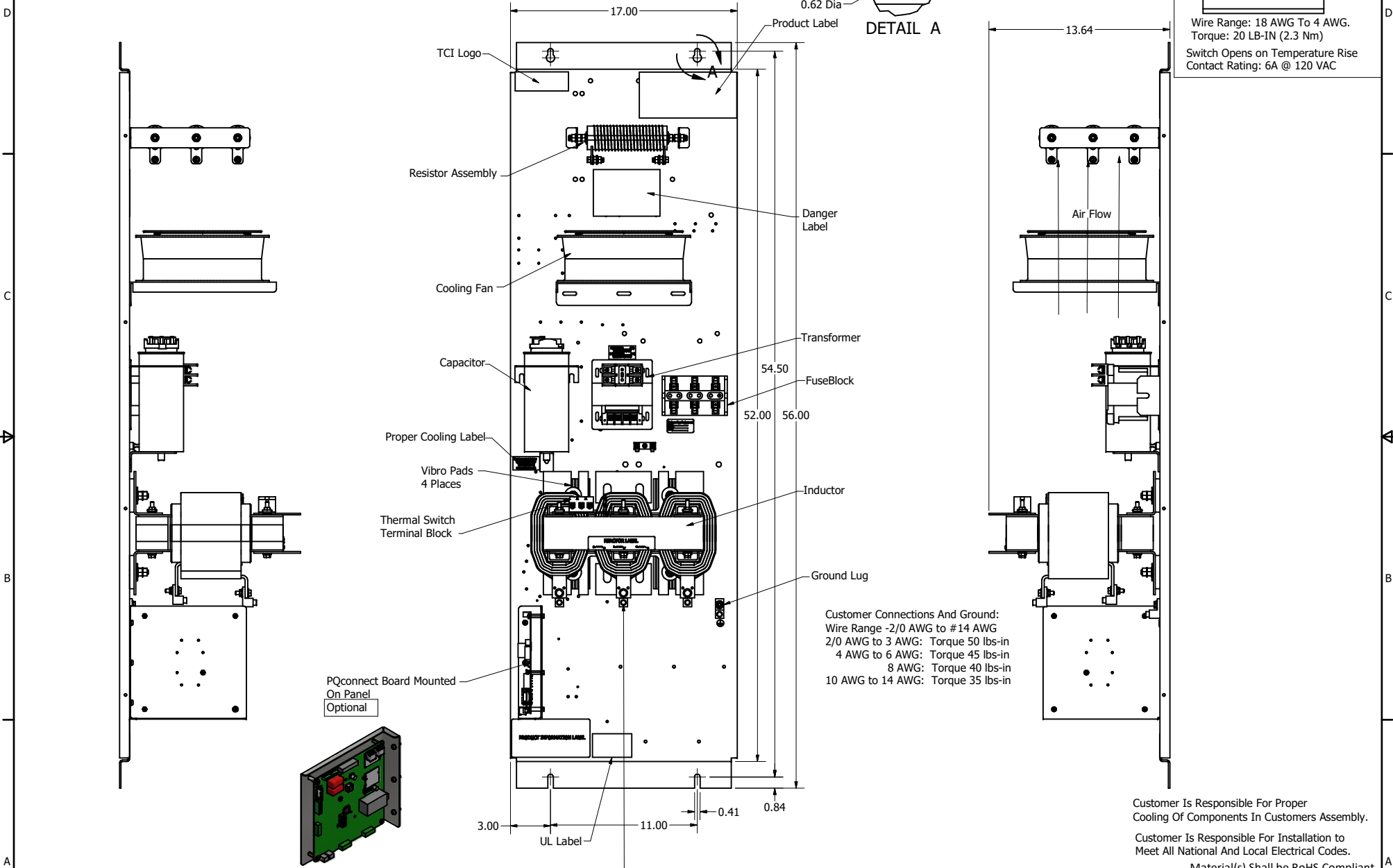
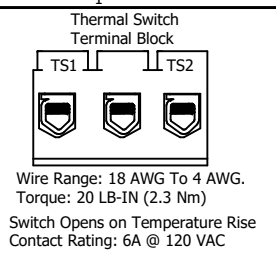
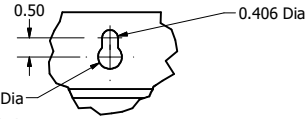


SineWave Part Number	Schematic Drawing#	Approx Weight (LBS)
KMG130A00A	24281-3A	200
KMG130A00P	24281-3P	205

HorsePower (HP)	kVar	Max Amps	Voltage (V)	HZ	Phase
100	10	130	480	60	3



Customer Connections And Ground:
 Wire Range -2/0 AWG to #14 AWG
 2/0 AWG to 3 AWG: Torque 50 lbs-in
 4 AWG to 6 AWG: Torque 45 lbs-in
 8 AWG: Torque 40 lbs-in
 10 AWG to 14 AWG: Torque 35 lbs-in

Customer Is Responsible For Proper Cooling Of Components In Customers Assembly.

Customer Is Responsible For Installation to Meet All National And Local Electrical Codes.

Material(s) Shall be RoHS Compliant

Customer Connections
 U V W
 T1 T2 T3

TCI, LLC CLAIMS PROPRIETARY RIGHTS IN THE MATERIAL HEREIN DISCLOSED. IT IS SUPPLIED WITHOUT PREJUDICE TO ANY PATENT RIGHTS OF TCI AND MAY NOT BE REPRODUCED OR USED TO MANUFACTURE ANYTHING SHOWN THEREIN WITHOUT WRITTEN PERMISSION FROM TCI.				TOLERANCES (EXCEPT AS NOTED)	TCI W132 N10611 Grant Drive Germantown, WI 53022 KMG130A00-, SineWave Filter Open Panel, 100HP, 480V
				DECIMAL	
				.XX ±.25 .XXX ±.10	
				FRACTIONAL	
	B Add PQconnect Board	9/2/2020	DSW	± 1/16	DRN BY: DSW DATE: 10/07/2016 SCALE: 1/5 DRAWN: FILE: 104337DG NO. REVISION DATE BY ± 1"